



**BASEMENT
WINDOW
SYSTEMS**
www.boman-kemp.com



1-800-733-7886

Has your basement changed in 50 years?

ORDER NUMBER	EASY BUCK Wall 8" -12" sizes Available in nominal sizes	VINYL WINDOW Window size available in Low E	EASY WELL Height sizes 13, 23, 36, 46, 60, 72, 83	LADDER Available in 4'-0", 5'-0", 6'-0", 7'-0"	GRATE	FLAT COVER
3021	3021 5/8	36" x 25 5/8"	4024	4'-0"	4024	4024
4040	4040	48" x 48"	5236	4'-0"	5236	5236
5040	5040	60" x 48"	6436	4'-0"	6436	6436

IRC-2012 International Residential Code Requirements for One & Two Family Dwellings

EMERGENCY ESCAPE & RESCUE OPENING CODE

Emergency Escape and Rescue Openings: Section R310.1

Basements, habitable attics and every sleeping room shall have at least one operable emergency escape and rescue opening. Where basements contain one or more sleeping rooms, emergency egress and rescue openings shall be required in each sleeping room. Where emergency egress and rescue openings are provided, they shall have a sill height of not more than 44 inches (1118 mm) measured from the finished floor to the bottom of the clear opening. Where a door opening having a threshold below the adjacent ground elevation serves as an emergency escape and rescue opening and is provided with a bulkhead enclosure, the bulkhead enclosure shall comply with Section R310.3. The net clear opening dimensions required by this section shall be obtained by the normal operation of the emergency escape and rescue opening from the inside. Emergency escape and rescue openings with a finished sill height below the adjacent ground elevation shall be provided with a window well in accordance with Section R310.2. Emergency escape and rescue openings shall open directly into a public way, or to a yard or court that opens to a public way.

Natural Light: Section R303.1

Habitable rooms shall be provided with natural light by means of exterior glazed openings with an area not less than 8% of the floor area of such rooms. Sleeping rooms

and habitable rooms shall be provided with natural ventilation by means of openable exterior openings with an area of not less than 4% of the floor area of such rooms.

Window Wells: Section R310.2

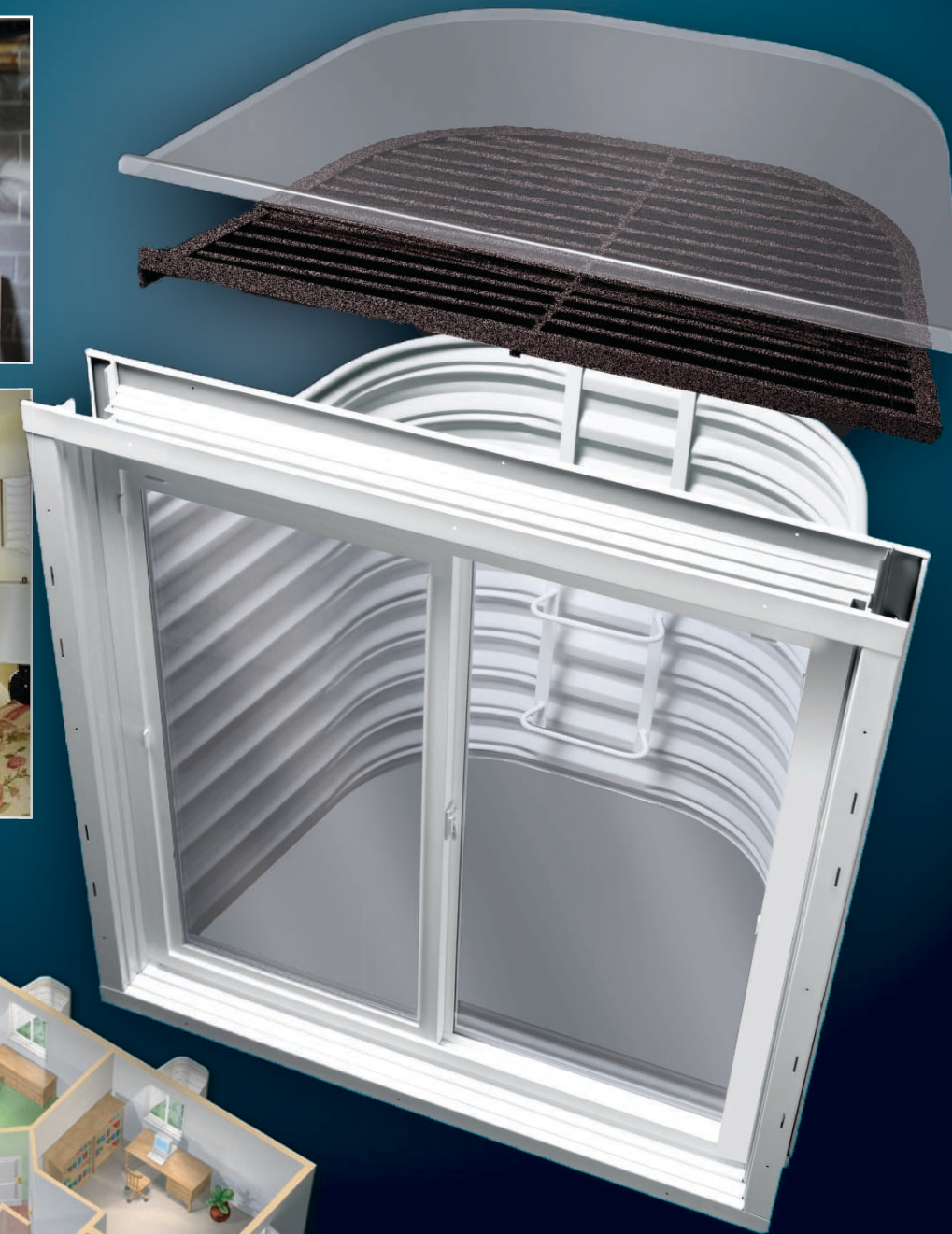
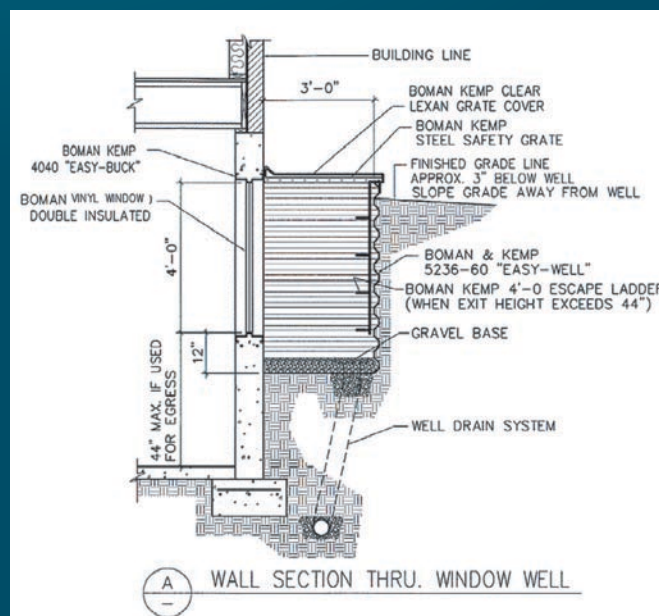
The area of a window well shall allow the emergency escape and rescue opening to be fully opened. The horizontal dimensions of the window well shall provide a minimum area of 9 square feet with a minimum horizontal projection and width of 36 inches. Exception: The ladder or steps required by Section 310.2.1 shall be permitted to encroach a maximum of 6 inches into the required dimensions of the window well.

Ladder and Steps: Section R310.2.1

Window wells with a vertical depth greater than 44 inches below adjacent ground level shall be equipped with a permanently affixed ladder or steps usable with the window in the fully open position. Ladders or rungs shall have an inside width of at least 12 inches, shall project at least 3 inches from the wall and shall be spaced not more than 18 inches on center vertically for the full height of the window well.

Bars, Grills, Covers and Screens: Section R310.4

Placed over emergency escape and rescue openings or window wells that serve such opening shall be releasable or removable from the inside without use of a key, tool or special knowledge.



**BASEMENT
WINDOW
SYSTEMS**

www.boman-kemp.com



The Boman Kemp Basement Window System

1 Easy-Buck™ Our innovative buck frames are manufactured from 18 gauge galvanized steel and feature a precision engineered four-inch profile that offers superior strength and lifetime durability.

2 Easy-Well™ Also made from heavy-duty 18 gauge galvanized steel. It features a one-inch profile with expertly designed double-ribbed corners for added strength, reducing the need for extra bracing.

3 Window This double insulated vinyl window comes equipped with a sliding sash, screen, and is lockable from the inside.

4 Safety Grate The safety grate is made of rolled angle iron steel and steel safety bars. It is designed to keep people and pets out of the Easy-Well™ and hold the weight of standard foot traffic.

5 Cover Made of a polycarbonate plastic, the cover is designed to be used along with the safety grate to keep debris and excess water out of the Easy-Well™.

6 Escape Ladder The safety ladder is designed to assist people in emergency escape and is attached to the back of the Easy-Well™.

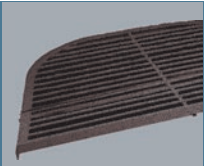


www.boman-kemp.com/products.html

The Easy-Well™ includes pre-punched keyholes for easy mounting.



Safety Grates are solid steel for strength and powder coated for durability.



With factory installed buck nuts, installation has never been easier.



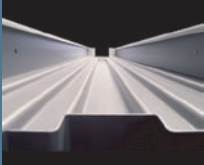
Escape Ladders allow for egress and ingress.



High quality windows include child friendly locks.



Easy-Bucks™ 4" profile provides 50% more strength.



Installation is a breeze

With its innovative design, installation is a snap in wood, aluminum, block, ICF, or pre-cast forms of any size.

- Boman Kemp's Easy-Buck™ includes pre-drilled holes and TIE-Slots for quick installation.
- The Easy-Well™ attaches to preinstalled fasteners on the Easy-Buck™ making install time under one minute!
- Designed for installation with the Easy-Buck™, Boman Kemp's windows snap easily into place, providing an exact fit and weather-proof seal.

www.boman-kemp.com/industries.html



BASEMENT WINDOW SYSTEMS
www.boman-kemp.com